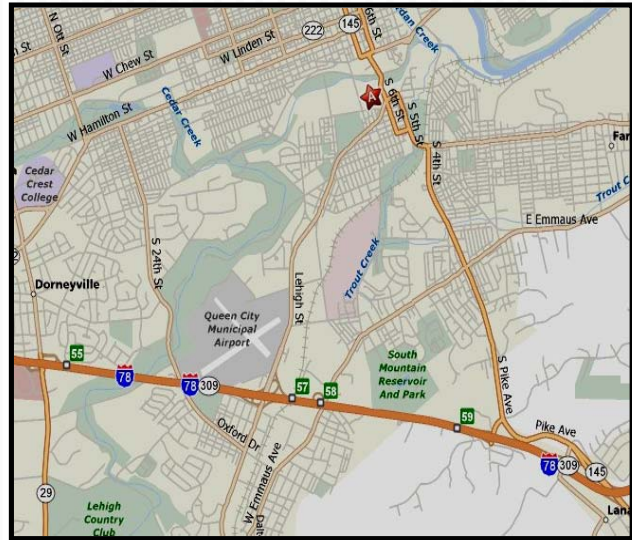




HAWLEY REALTY, INC.
COMMERCIAL AND INDUSTRIAL REAL ESTATE

944 Marcon Blvd. • Suite 120 • Allentown, PA 18109
Phone: 610.398.4000 www.hawleyrealty.com

**735 MILL STREET
Allentown, Lehigh County, PA**



- BUILDING SIZE:** 33,370 sq. ft.
- LOT SIZE:** 1.6 acre lot
- DESCRIPTION:** Brick concrete block and frame structure, 14-18' ceiling height, HVAC package for office, warehouse unheated, full public utilities, 3 phase electric, truck tailgates and drive in doors, outside storage permitted, good labor access.
- LOCATION:** PA Route 476 within 15 miles, Route 33 15 miles, good highway access with Lehigh Street / I-78.
- LEASE RATE:** \$2.99 per sq. ft. Net (3)
- SALE PRICE:** \$715,000.00

INFORMATION DEEMED RELIABLE BUT NOT GUARANTEED

THIS DOCUMENT SHALL NOT BE DEEMED TO BE AN OFFER TO SELL OR LEASE, NOR IS IT INTENDED TO EMPLOY ANY OUTSIDE BROKER WITHOUT SUCH BROKER ENTERING INTO A WRITTEN BROKERAGE COMMISSION AGREEMENT ACCEPTABLE TO THE OWNER OR LESSOR AND ITS COUNSEL. ALTHOUGH ALL INFORMATION FURNISHED REGARDING PROPERTY FOR SALE, RENTAL OR FINANCING IS FROM SOURCES DEEMED RELIABLE, SUCH INFORMATION HAS NOT BEEN VERIFIED AND NO EXPRESS REPRESENTATION IS MADE NOR IS ANY TO BE IMPLIED AS TO THE ACCURACY THEREOF AND IT IS SUBMITTED SUBJECT TO ERRORS, OMISSIONS, CHANGE IN PRICE, RENTAL OR OTHER CONDITIONS, PRIOR SALE, LEASE OR FINANCING OR WITHDRAWAL, WITHOUT NOTICE.