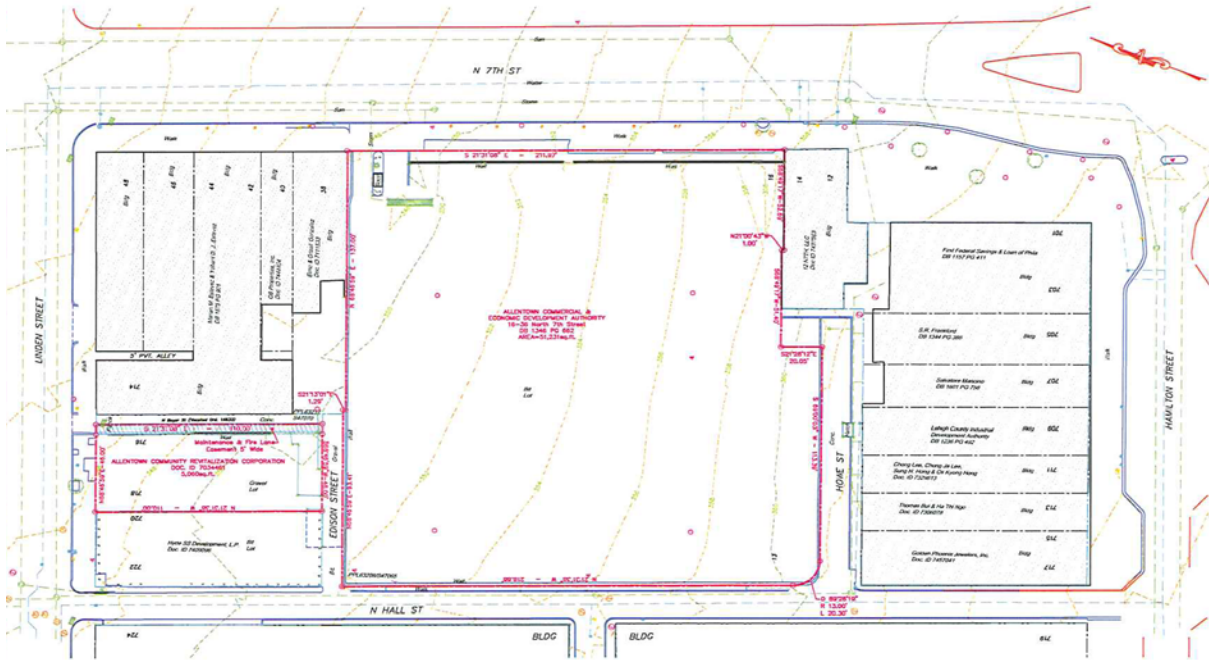




**22 N. Seventh St.
Allentown, Lehigh County, PA**



Lot Size: 1.127 acres M/L - 2 lots

Description: Prime center business district commercial development site, public utilities available, level.

Zoning: B-2

Location: Located on 7th Street corridor, within 3 miles of 7th St. Exit of Route 22. Within blocks of PPL Headquarters, Lehigh County City Government offices and new office/commercial buildings.

**SEALED BID DUE ON OR BEFORE DEC. 28, 2009
ALL OFFERS CONSIDERED**

INFORMATION DEEMED RELIABLE BUT NOT GUARANTEED

THIS DOCUMENT SHALL NOT BE DEEMED TO BE AN OFFER TO SELL OR LEASE, NOR IS IT INTENDED TO EMPLOY ANY OUTSIDE BROKER WITHOUT SUCH BROKER ENTERING INTO A WRITTEN BROKERAGE COMMISSION AGREEMENT ACCEPTABLE TO THE OWNER OR LESSOR AND ITS COUNSEL. ALTHOUGH ALL INFORMATION FURNISHED REGARDING PROPERTY FOR SALE, RENTAL OR FINANCING IS FROM SOURCES DEEMED RELIABLE, SUCH INFORMATION HAS NOT BEEN VERIFIED AND NO EXPRESS REPRESENTATION IS MADE NOR IS ANY TO BE IMPLIED AS TO THE ACCURACY THEREOF AND IT IS SUBMITTED SUBJECT TO ERRORS, OMISSIONS, CHANGE IN PRICE, RENTAL OR OTHER CONDITIONS, PRIOR SALE, LEASE OR FINANCING OR WITHDRAWAL, WITHOUT NOTICE.